

ANTI-STATIC BARS

1255 STATIC ELIMINATORS

The 1255 Bar is a version of the best selling 1250-S Bar with a detachable cable.

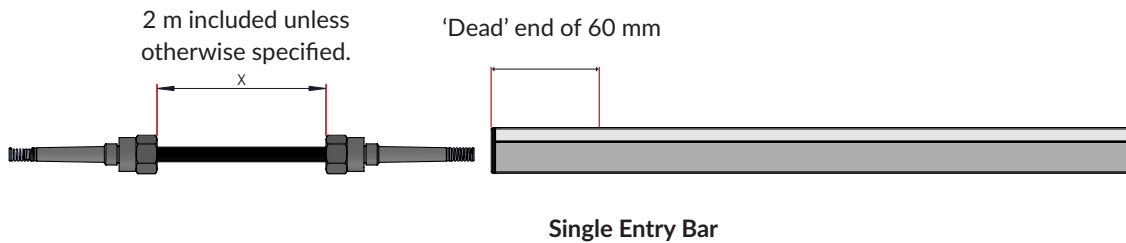
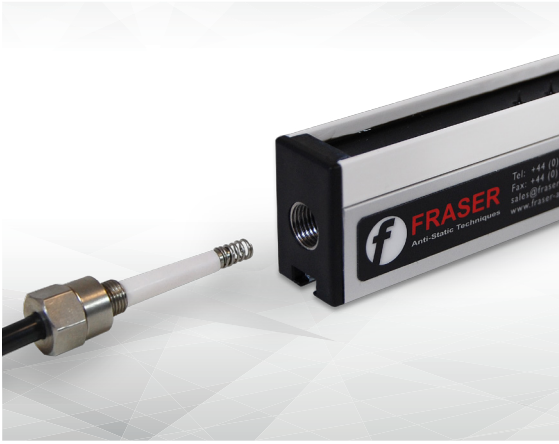
Please see [1250-S Datasheet](#) for details of applications and specification.

- > The 1255 Bar is designed for applications where there is a requirement for the HT cable to be detached from the Bar. Typically this may be because the application risks damaging the cable.
- > The price of the 1255 Bar includes a 2 m long double-ended cable. Longer cable lengths can be specified.
- > The high voltage from the Power Unit must be turned off before disconnecting the cable.
- > NB. The 1255 variant is not covered by the UL certification of the 1250-S Bar.

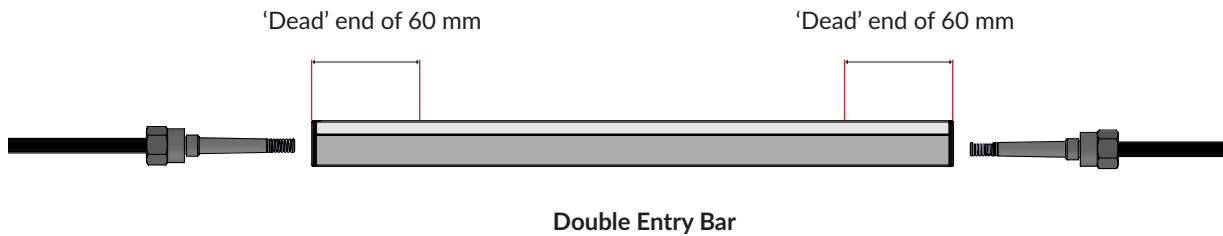


Specification

Length:	From 180 mm to 6000 mm or 200 mm to 6000 mm for detachable cable at each end.
Construction:	Anodised aluminium, epoxy resin, ABS and hardened etched emitters.
Cable:	Hi-Flex 30 kV screened cable with 70 mm bend radius. Standard length is 2 m - longer lengths can be specified at time of order (subject to maximum load on power unit).
Safety:	5 mA maximum current from Power Unit. High voltage resistance inside bars further limits current below 50 μ A.
Environment:	60° maximum temperature. 70% rH non-condensing max.
Power Units:	Use with Fraser 5.5 kV and 6 kV Power Units. See Datasheets.
Standards:	CE.



It is possible to have Bars in series with a detachable connection at each end.



Variants

- Airboost:** For extending the range up to 500 mm, see 1250-AB and 1250 Air Datasheets.
- Balanced:** For applications where an accurate electrical ion balance is required.
- Combination:** A passive static discharger may be combined with a 1250, for speeds over 1000 m/min.